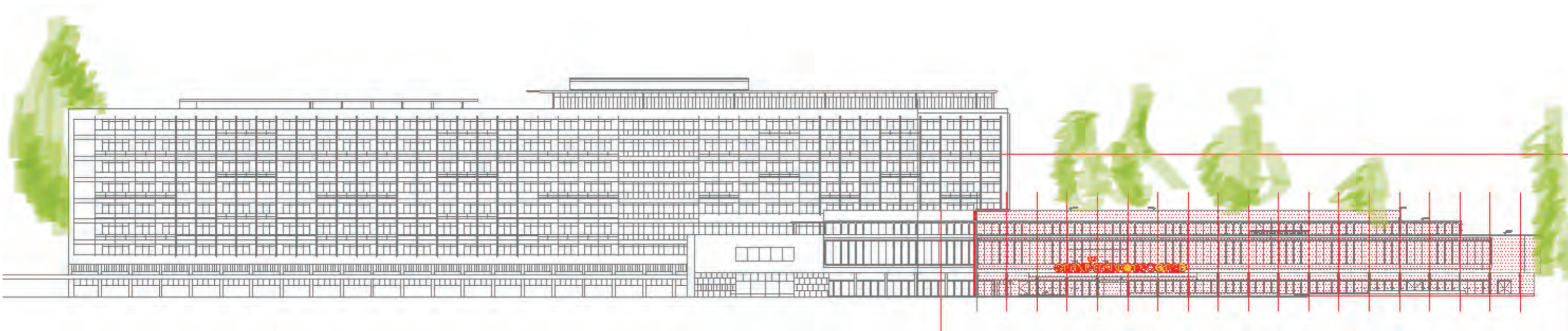
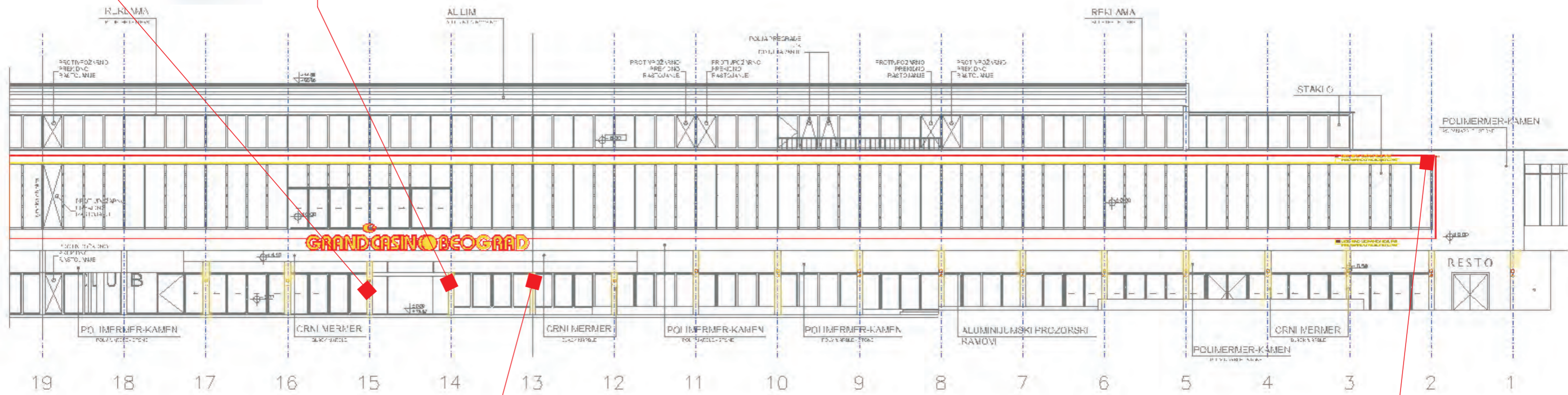




LIGHT DESIGNE CENTAR

GRAND CASINO BEOGRAD

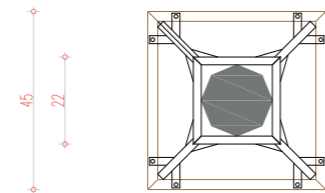
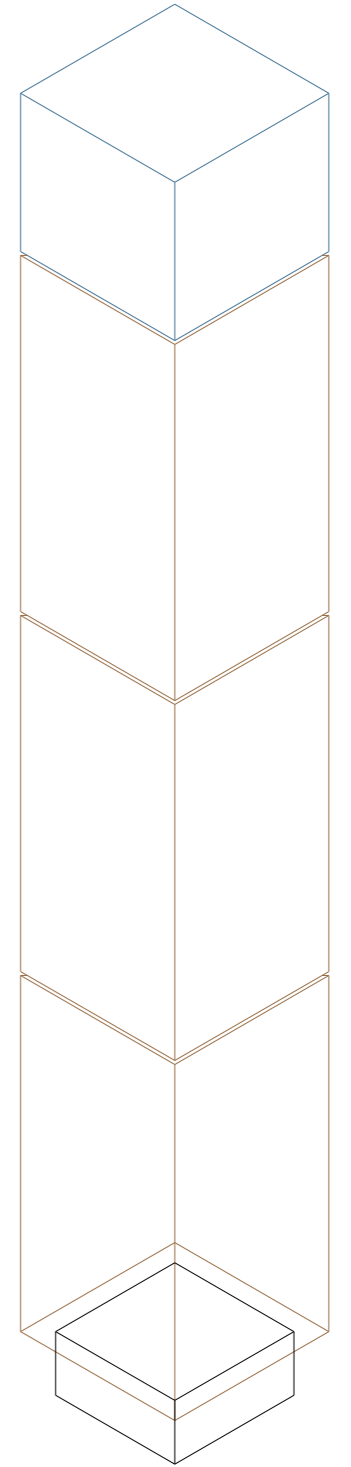
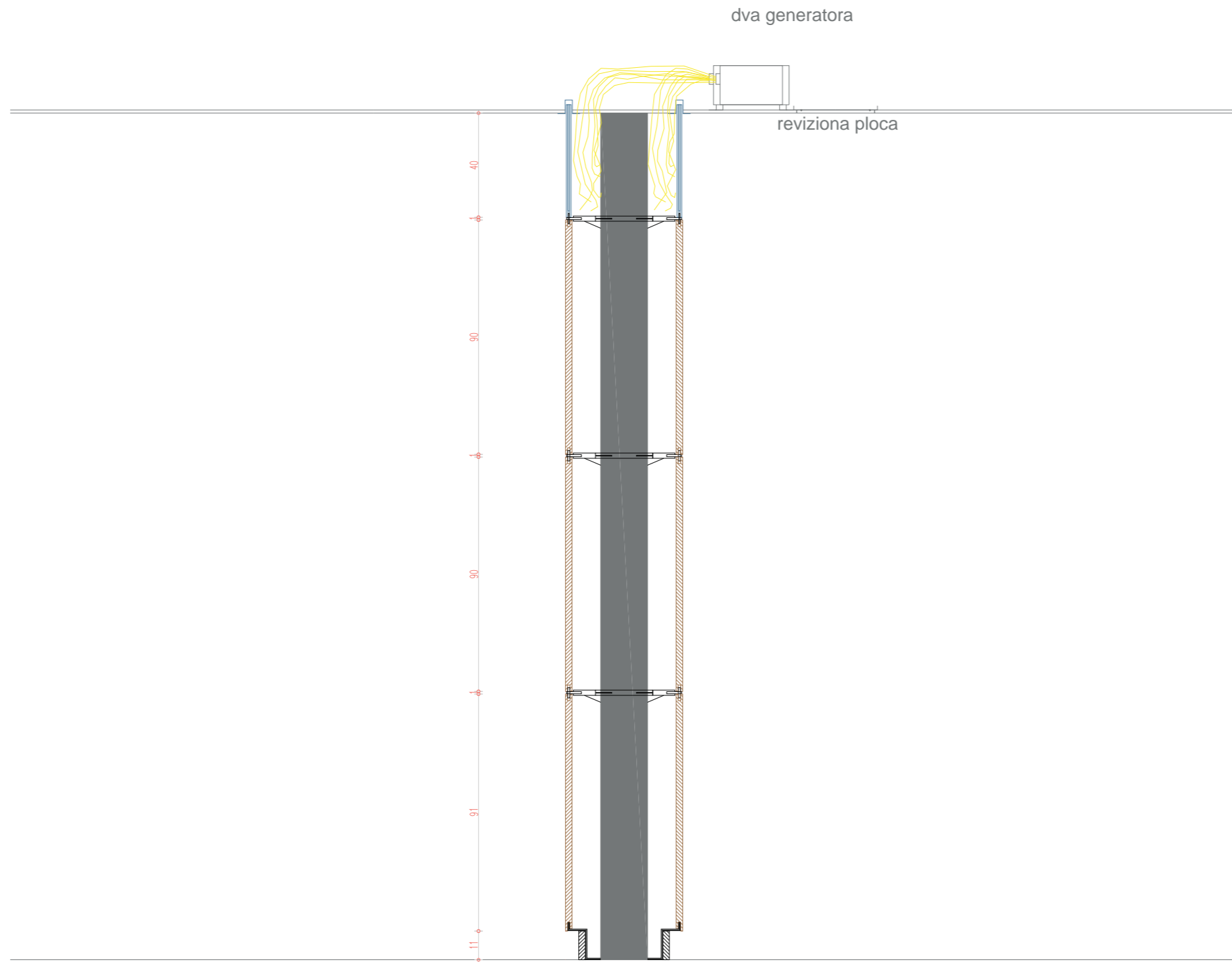






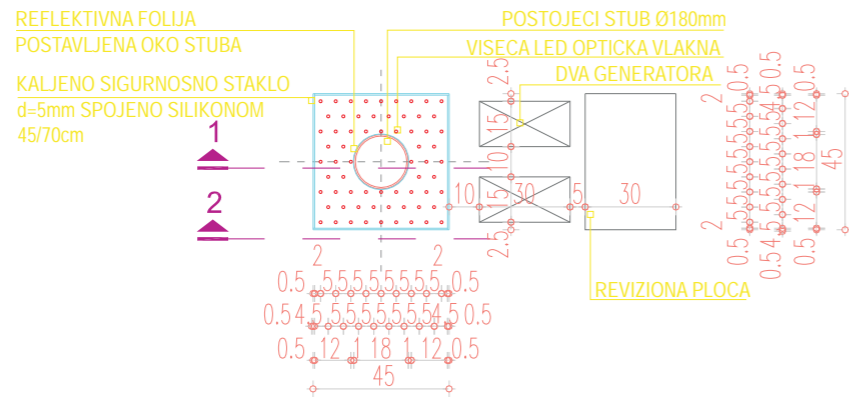


DETALJ OBLAGANJA STUBA I DISPOZICIJE UNUTRASNJE RASVETE R 1:25

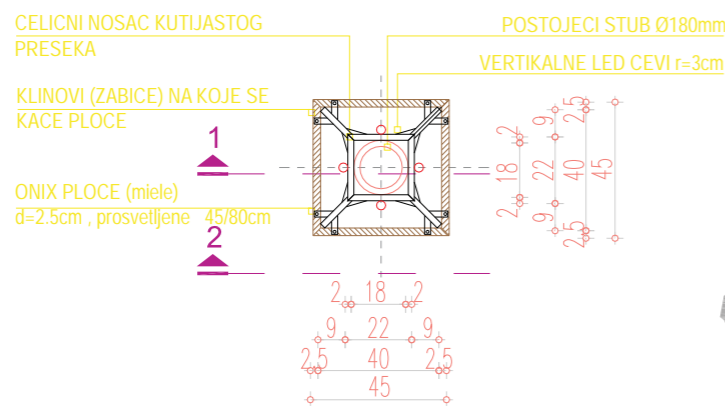


DETALJ STUBA - TIP C

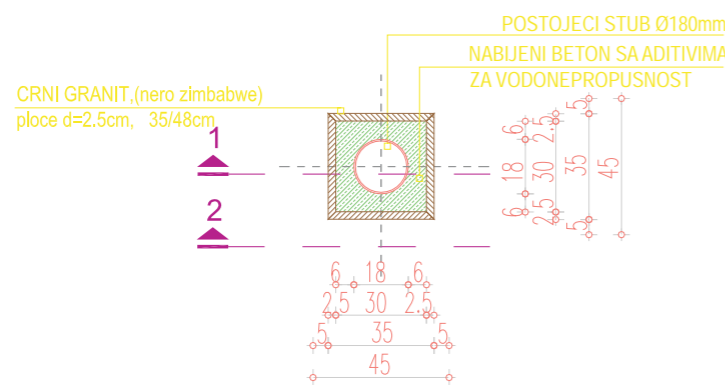
NAPOMENA: STUB TIPA C JE U BAZI, ODNOSNO DONJEM DELU OSLOJEN NA POD BAZENA I NALAZI SE U VODI. PROJEKTOVANO UDALJENJE ONIX KAMENA OD POVRŠINE VODE U BAZENU JE OD 10-15cm.



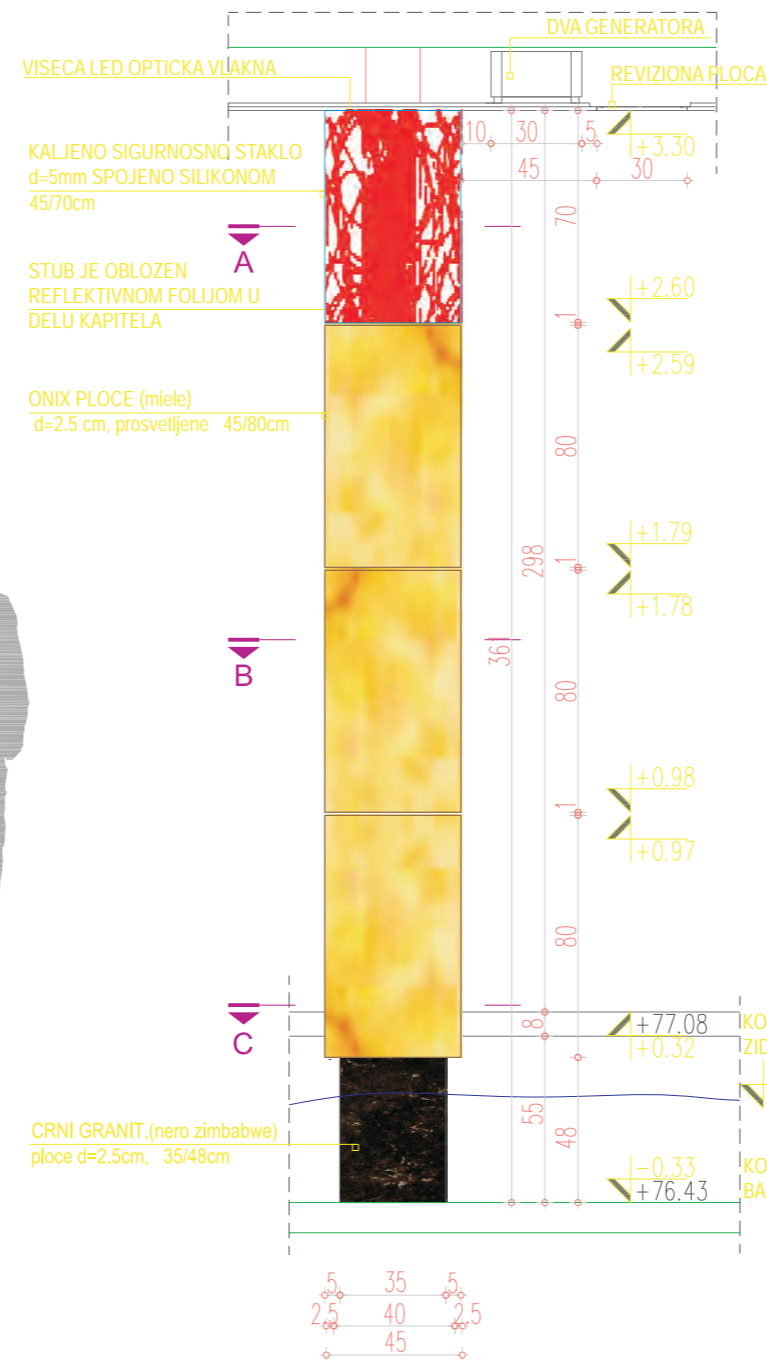
DETALJ OSNOVE STUBA TIPA B, A-A R=1:25



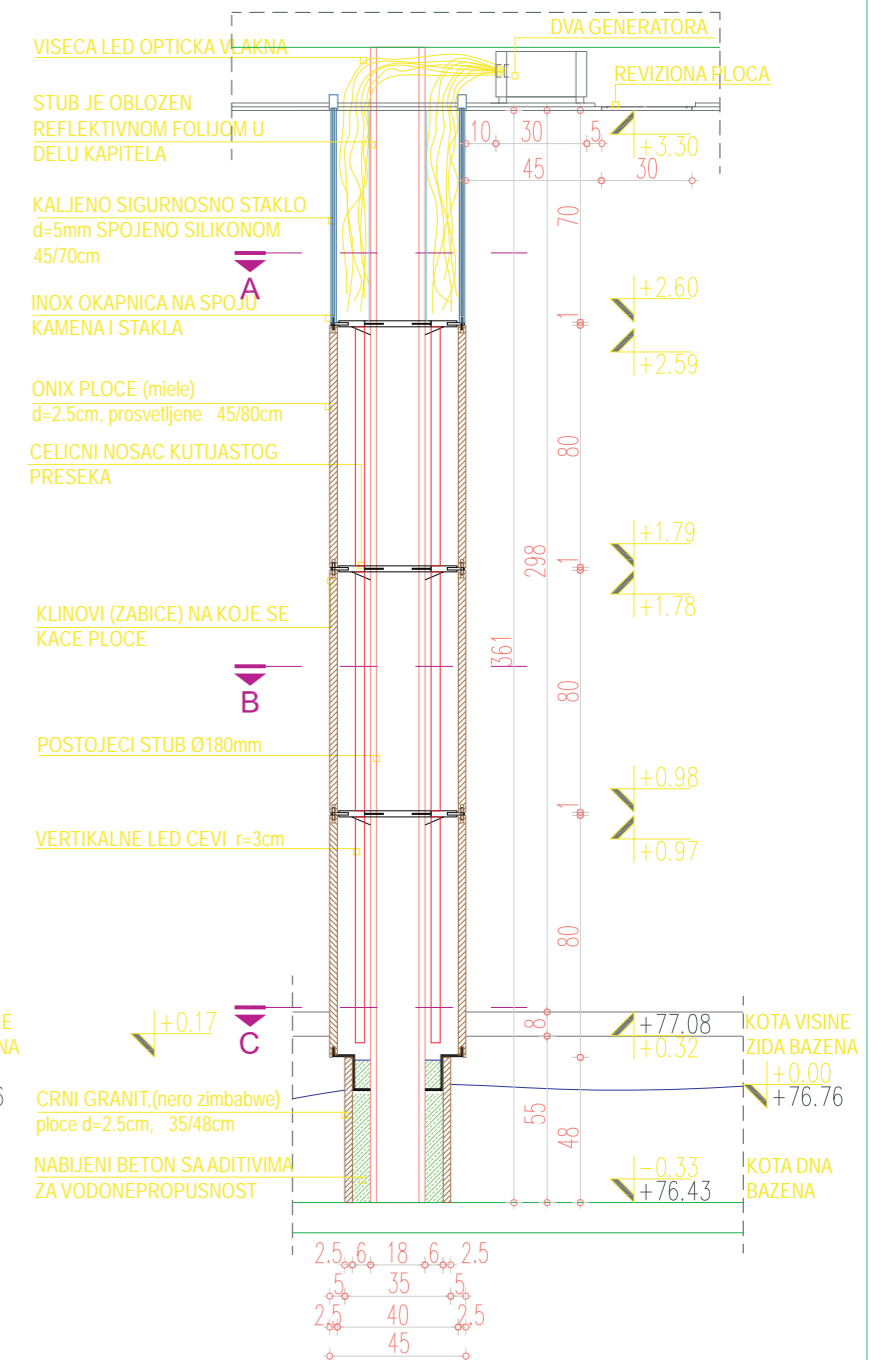
DETALJ OSNOVE STUBA TIPA B, B-B R=1:25



DETALJ OSNOVE STUBA TIPA B, C-C R=1:25



IZGLED STUBA TIPA B, 2-2 R=1:25



PRESEK STUBA TIPA B, 1-1 R=1:25





Metronomis Malmö
prvi put korišæeno u Beogradu